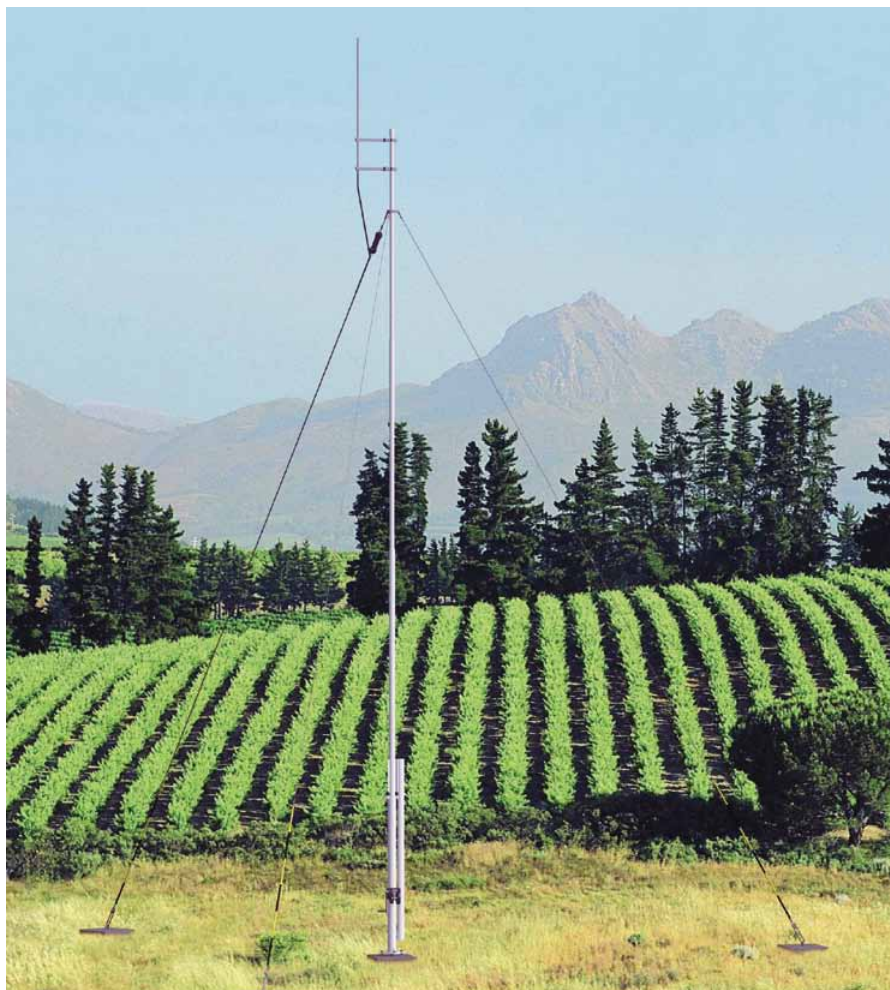


Vaisala Tiltable Masts DKP206W and DKP210W



Features/Benefits

- Easily tilted down by one person for equipment installation and maintenance
- Insulated guy wire and lightning rod provide maximum lightning safety
- Can withstand winds of up to 50 m/s; up to 75 m/s with two sets of guy wires
- Suitable for wide range of meteorological and climatological automatic weather station applications
- Foundation set includes all the necessary parts for quick and easy installation

The Vaisala Tiltable Masts DKP206W (6 m high) and DKP210W (10 m high) are suitable for a wide range of surface weather and climatological applications. The mast tubes are made of anodized aluminum. The remaining parts of the main assembly are made of stainless steel to resist weathering. The mast is painted white. One maintenance person can effortlessly tilt the mast with the optional, easily detached winch to maintain the sensors and other equipment installed on the upper mast assembly. This significantly

reduces the costs associated with maintaining the automatic weather station.

The basic mast delivery includes the lightning rod with the grounding cable, one set of guy wires, the lifting rod and the foundation set. All the components are packed in durable cardboard boxes that are suitable for airfreight.

The lightning rod protects the sensors and other equipment by means of non-conductive holders and grounding via one of the three guy wires which is totally isolated from the mast. The

equipment is always grounded to a separate grounding point.

With one standard set of guy wires, the mast can easily withstand winds of up to 50 m/s when the weather station enclosure, solar panel and sensors are installed on it. The optional second guy wire set enables the DKP210W to withstand winds of up to 75 m/s.

The foundation set includes all the parts needed for constructing a steady and correctly oriented base for the mast. The only additional item needed at the installation site is concrete or an existing concrete block.

Technical data

Main mast assembly

Height	
DKP206W	6 m
DKP210W	10 m
Maximum wind speed (DKP210W)	
With one set of guy wires	50 m/s
With two sets of guy wires	75 m/s
Diameter	
Lowest section (0 ... 1.9 m)	100 mm
Second section (1.9 ... 4.9 m)	75 mm
Third section	63 mm
Highest section	50/60 mm
Top of the mast	60 mm
Tube material	Aluminum alloy
Base and hinge	Stainless steel
Other parts, e.g. bolts	Stainless steel

Guy wires

Material	Stainless steel
Breaking strength	28 kN
Marking	Black and yellow cable shrouds to a height of 2 meters above the ground

Foundation set

Material	Galvanized steel
Thread of foundation bolts	M20
Length of foundation bolts	300 mm
Wedge bolts	Cast or drilled into concrete using the template provided

Mast concrete base

Soil bearing capacity must exceed 45 kPa

Coating/Painting

Aluminum parts	Anodized and painted
Steel parts	Galvanized
Stainless steel parts	
Base and hinge	Painted
Other parts	Uncoated

Packages

Material	Cardboard
Weight	
(packaged with DKF200, DKL200, DKW200)	
DKP206W	105 kg
DKP210W	125 kg
Maximum length	< 3.1 m,
	suitable for airfreight

Order information

DKP210W	10 m mast with guy wire set and basic accessories
DKP206W	6 m mast with guy wire set and basic accessories
Basic accessories	
DKF200-1	Foundation set
DKL200	Passive lightning rod
DKP200LR	Lifting rod
Options	
DKW200	Winch
DKP200TS	Tilting support
DKP210GW-2	Additional guy wire set for DKP210W

VAISALA

For more information, visit
www.vaisala.com or contact
 us at sales@vaisala.com

Ref. B210369EN-B ©Vaisala 2010
 This material is subject to copyright protection, with all
 copyrights retained by Vaisala and its individual partners. All
 rights reserved. Any logos and/or product names are trademarks
 of Vaisala or its individual partners. The reproduction, transfer,
 distribution or storage of information contained in this brochure
 in any form without the prior written consent of Vaisala is strictly
 prohibited. All specifications — technical included — are subject
 to change without notice.

