

VAISALA

IRIS

EXPERIENCE MORE



The **next** generation in weather radar software.

PUBLISHED BY

Vaisala Oyj
P.O. Box 26
FI-00421 Helsinki
Finland

Phone (int.): +358 9 8949 1
Fax: +358 9 8949 2227

Try IRIS Focus at iris.vaisala.com.

© Vaisala 2015

This material is subject to copyright protection, with all copyrights retained by Vaisala and its individual partners. All rights reserved. The reproduction, transfer, distribution or storage of information contained in this document in any form without the prior written consent of Vaisala is strictly prohibited. All specifications — technical included — are subject to change without notice.

B211503EN-A

Experience More

IRIS Focus Weather Radar Software has a modern display and a rich set of tools that enable you to see and analyze your weather radar data like never before. Developed with customers, the easy-to-use interface reduces complexity and training time. IRIS Focus enables you to better understand storms for quicker decisions and more accurate precipitation estimation and classification.

Analyze Your Data Faster

IRIS Focus allows you to see more with the multi-panel display and layer multiple data points from different radar products on one screen. On-demand radar data generation allows you to zoom in on data at the highest resolution.

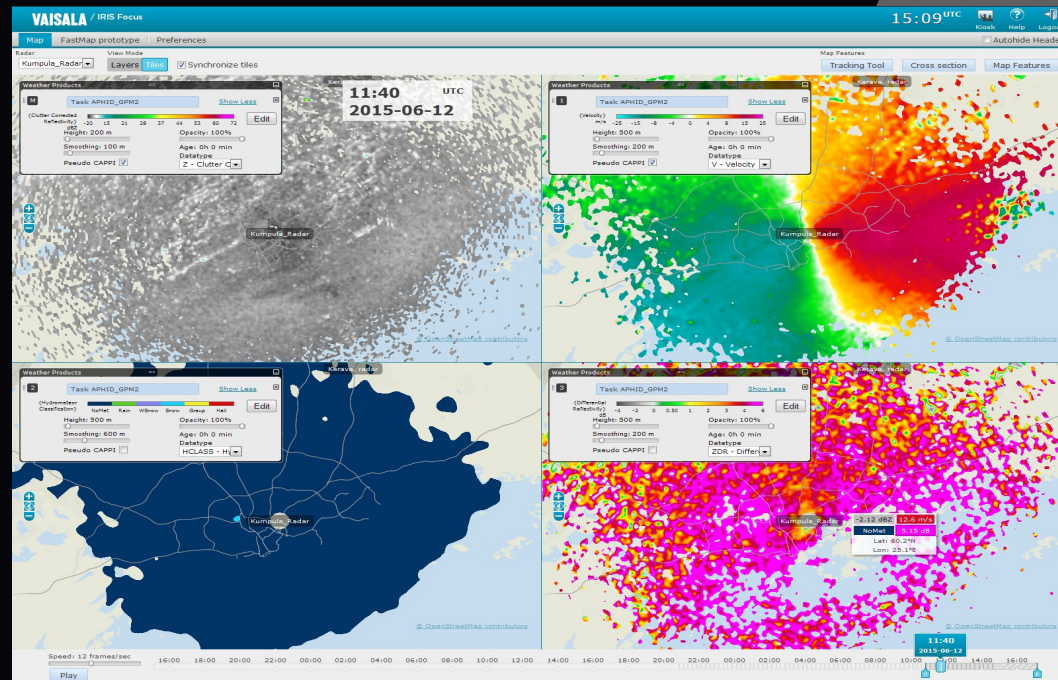


ANALYZE YOUR DATA FASTER

See More with the Multi-Panel Display

- *Display up to four radar products within the same window*
- *Synchronize all four panels in time and location*
- *Animate all four panels together, and if you move the cursor to a different location, all four panels move together*

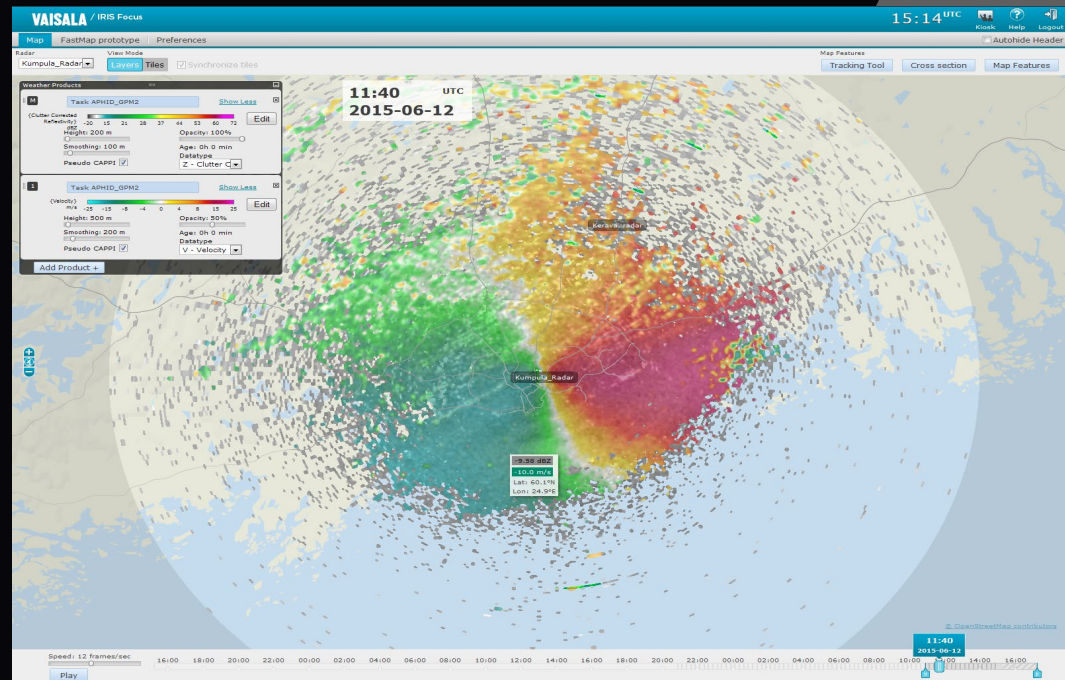
ANALYZE YOUR DATA FASTER



Overlay Multiple Data Points

- *Layer multiple data points on top of each other, such as radar reflectivity and radial velocity for better understanding*
- *See both the radial winds and intensity simultaneously*
- *Set the height, smoothing, opacity, and data type in the layer*

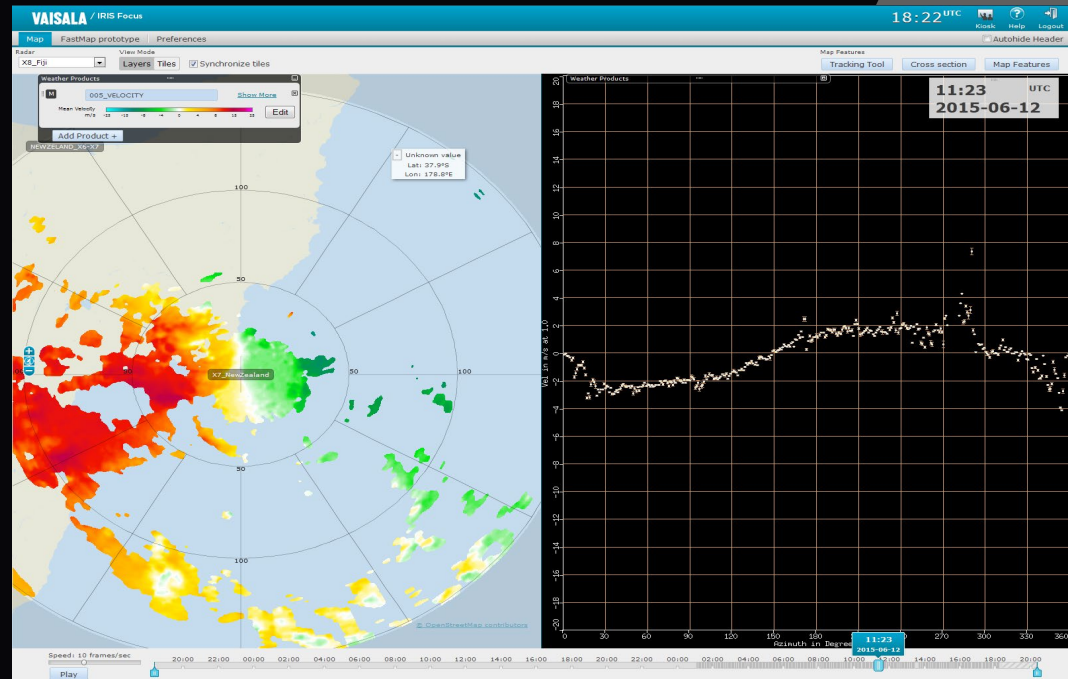
ANALYZE YOUR DATA FASTER



Display Data Not on a Map

- *Show non-map data side-by-side mapped data*
- *The example is showing how the radial velocity measurement changes with respect to direction of the radar site*

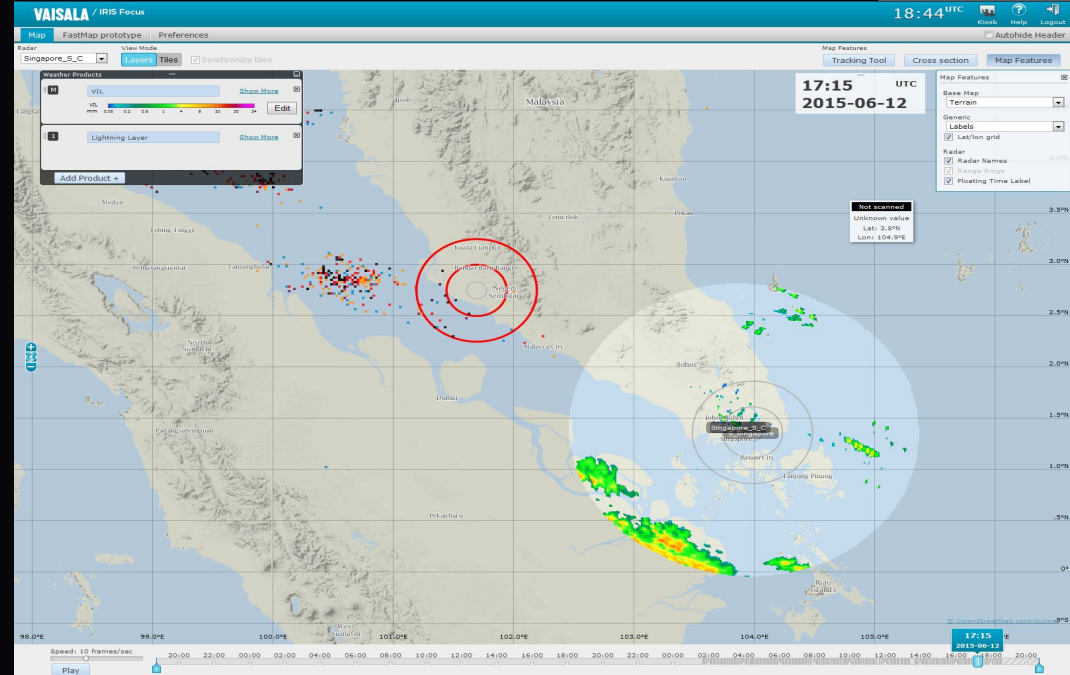
ANALYZE YOUR DATA FASTER



Generate On-Demand Data at Highest Resolution

- *On-demand radar product generation for Plan Position Indicator (PPI) and Constant Altitude PPIs (CAPPI) products*
- *Data is displayed at highest resolution possible for the given screen space*
- *Zoom in and data will be re-generated to increase resolution*
- *Adjust the CAPPI heights interactively, add smoothing, and choose different data variables*

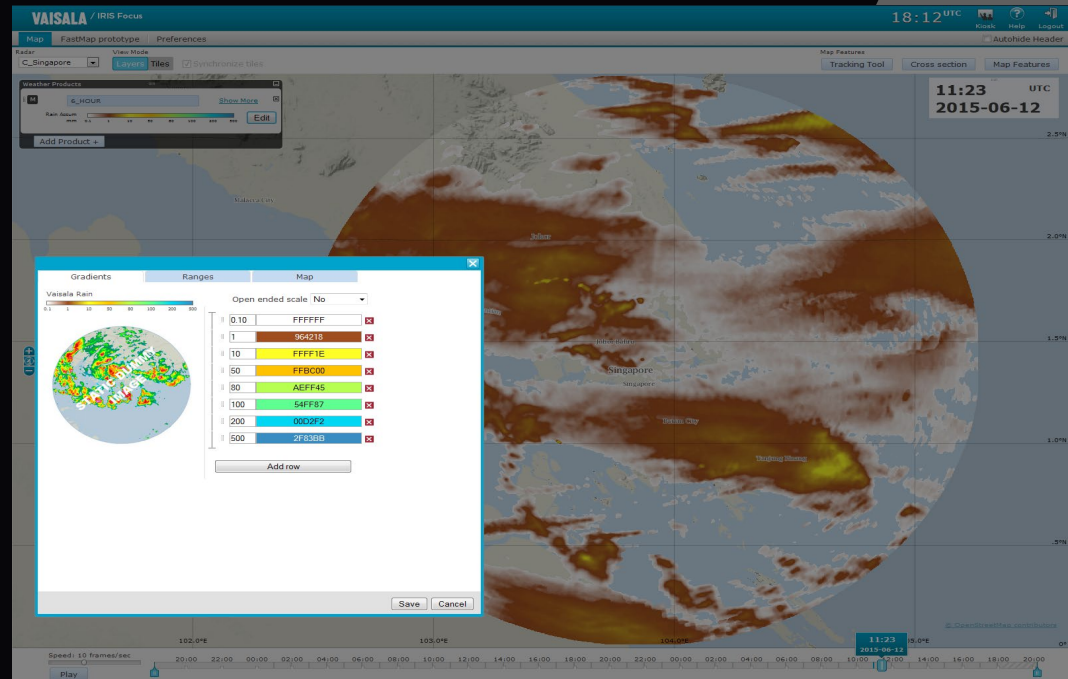
ANALYZE YOUR DATA FASTER



More Color Options to Prevent Distortion

- *The color scale editor allows you to design color scales that don't distort the data by falsely highlighting certain colors*
- *Color palette goes beyond traditional red, green, and blue color adding hue and luminance control*
- *Administrators can set a standard scale and share across agency*

ANALYZE YOUR DATA FASTER



Understand Storms to Make Better Decisions

Better graphics display and data processing capabilities gives you many new ways to see your weather radar data. IRIS Focus has a rich set of tools for quicker decision making and accurate precipitation estimation and classification.

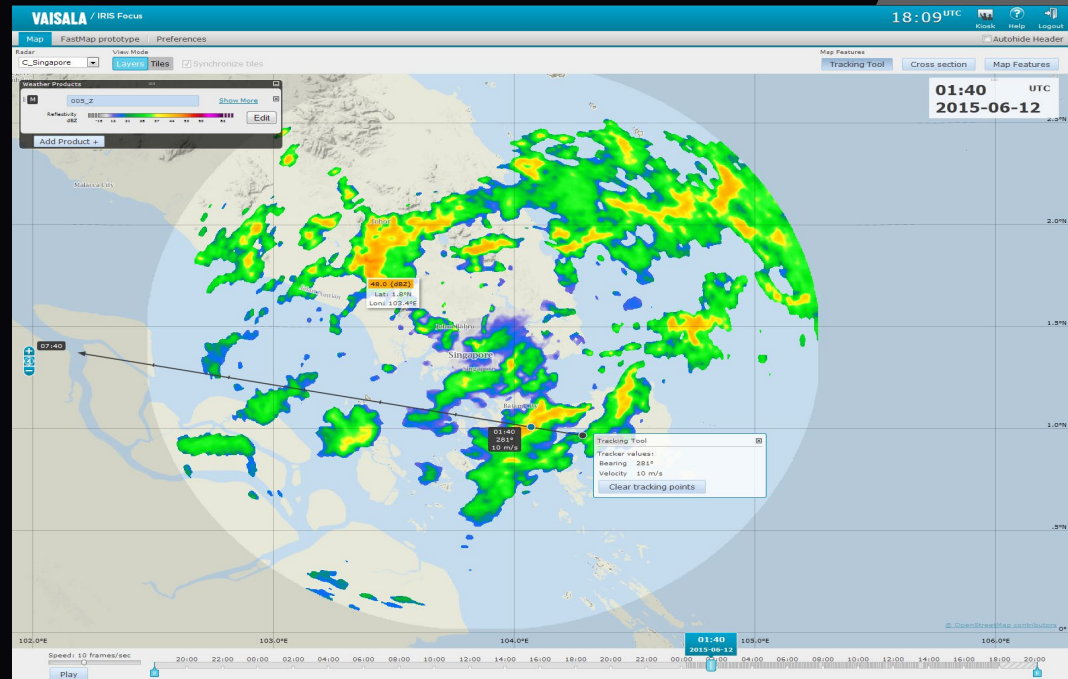
BETTER UNDERSTANDING OF STORMS



Storm Tracking Tool

- *Mark the location of a storm at different points in time to help project future movement of the storm*
- *Enables the computation of rate, time and distance equations*

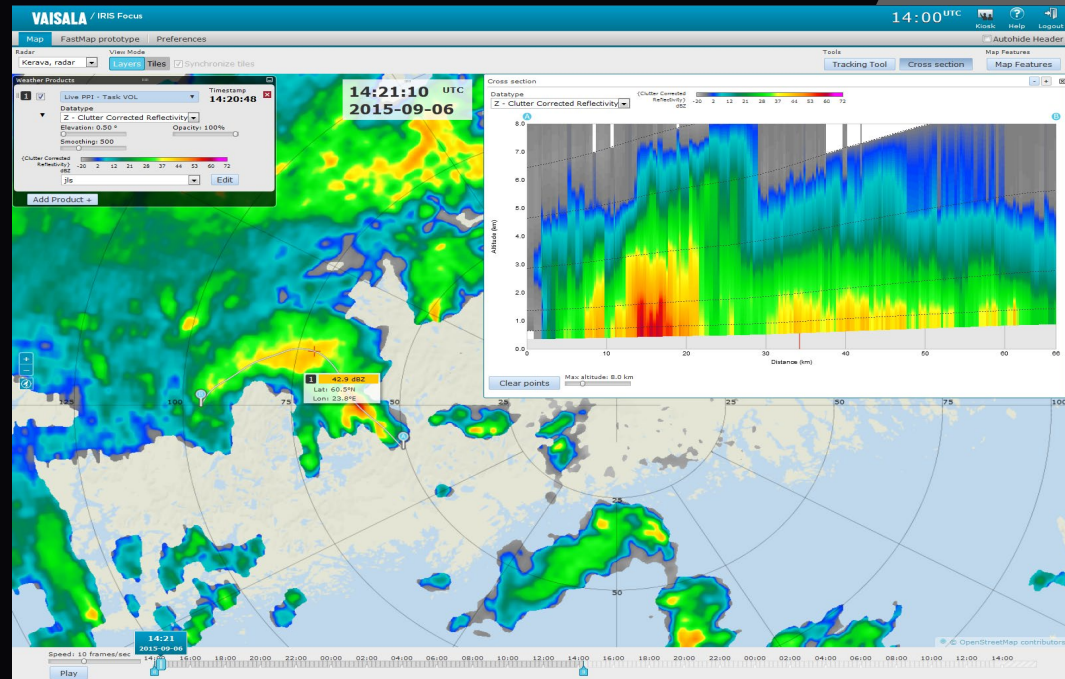
BETTER UNDERSTANDING OF STORMS



See the Vertical Structure of Storms

- *Using the cross-section tool you can see data at different altitudes with respect to other data points for better understanding of storm motion and growth*
- *Improves your interpretation of the three dimensional area and a storm's evolution in time*
- *Allows you to perform curved cross-sections to analyze frontal boundaries and curved rain bands*

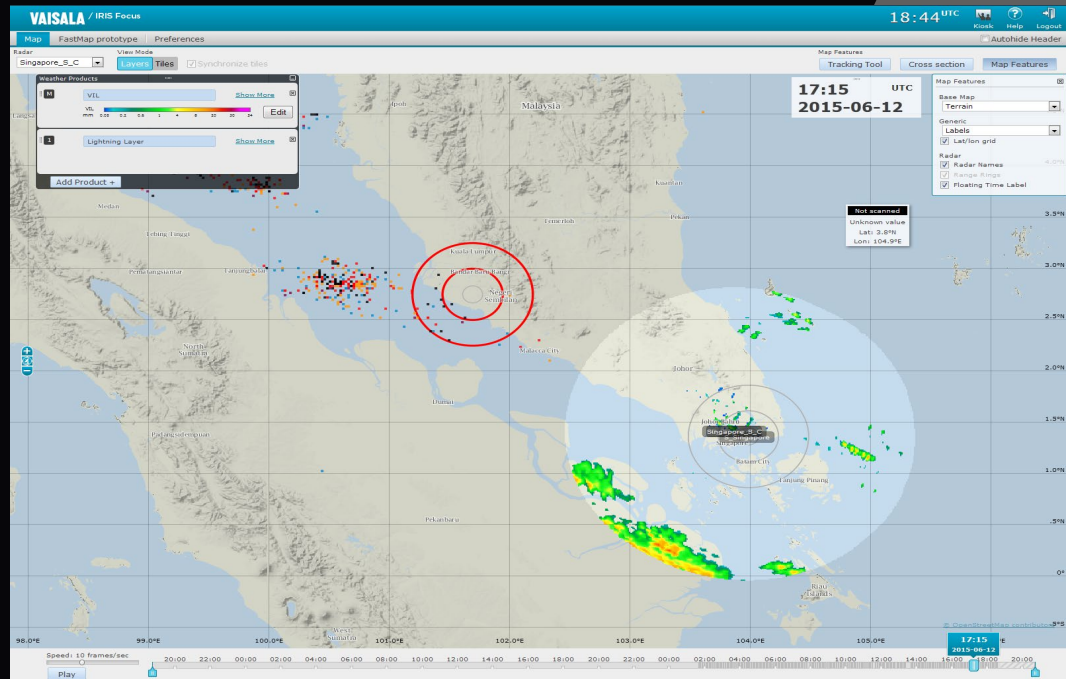
BETTER UNDERSTANDING OF STORMS



Display Data Outside of Radar Range

- *Extend observations to show convective storms beyond the radar range*
- *Layer other weather data, such as lightning data from Vaisala's Global Lightning Dataset GLD360 outside of the range of the radar*

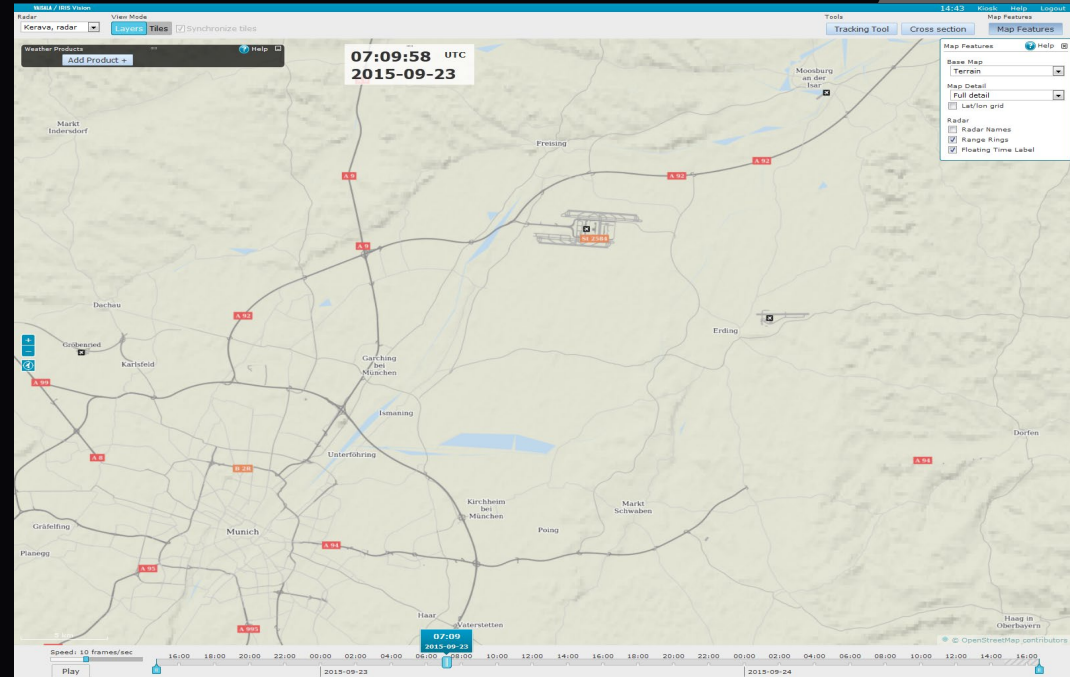
BETTER UNDERSTANDING OF STORMS



Enhanced GIS Data Sets

- *Locate weather data with respect to geographical features for better situational awareness*
- *Geographic Information System (GIS) datasets are continuously updated using Open Source GeoServer*
- *You can add your own GIS data sets*

BETTER UNDERSTANDING OF STORMS



Reduce Training Time, Increase Accessibility

The simple and easy to understand interface, interactive tutorials and context-sensitive help reduces training time. Web-based access increases accessibility of your data throughout your organization.

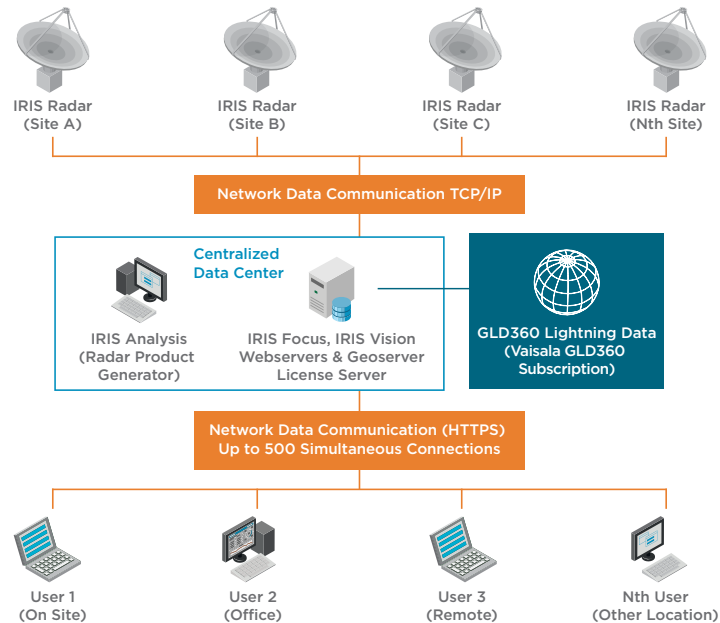
INCREASE ACCESSIBILITY



Access Your Data from Anywhere

- *IRIS Focus is web-based allowing you the ability to access your data from anywhere*
- *Data does not have to be stored on your computer*
- *Easily share your data with colleagues in other departments and outside of the agency*

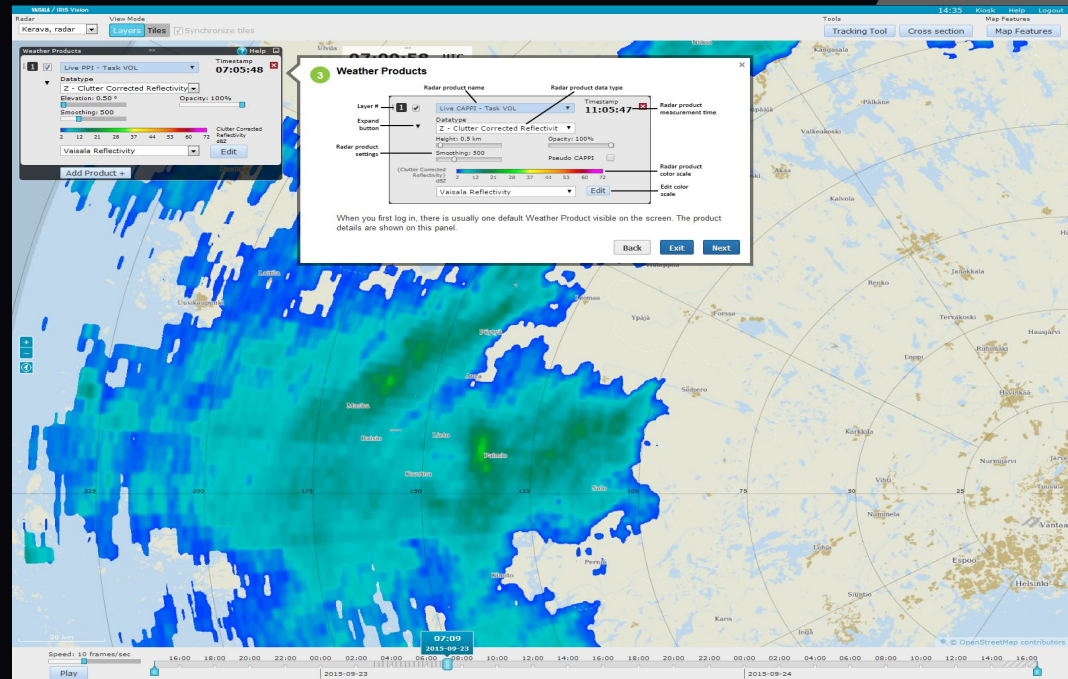
INCREASE ACCESSIBILITY



Tool Tips and Localized Context-Sensitive Help

- *Interactive step-by-step tutorials reduce training time*
- *Built-in tool tips and context-sensitive help aid throughout*
- *Available languages: English, Spanish, Portuguese, and Russian are available*
- *More languages can be added on request*

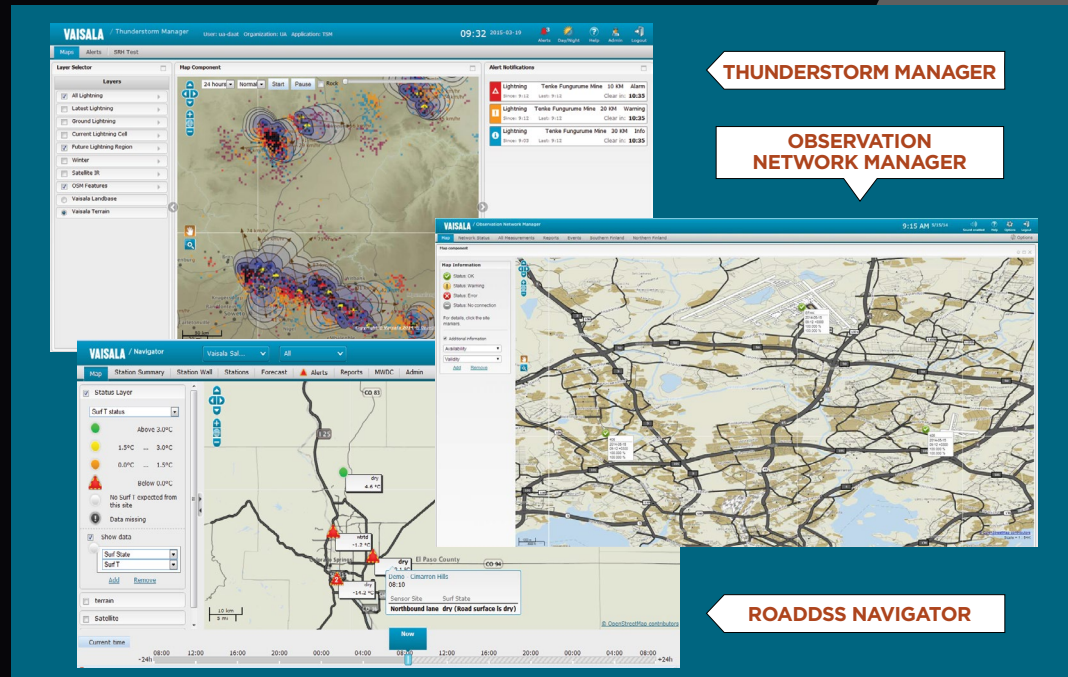
INCREASE ACCESSIBILITY



Built on Common Software Platform

- *Reduces training time allows seamless transition between two or more Vaisala products*
- *Vaisala products that use same platform: Observation Network Manager, AviMet,[®] Thunderstorm Manager, RoadDSS Manager and DigiCORA[®] Sounding System MW41*

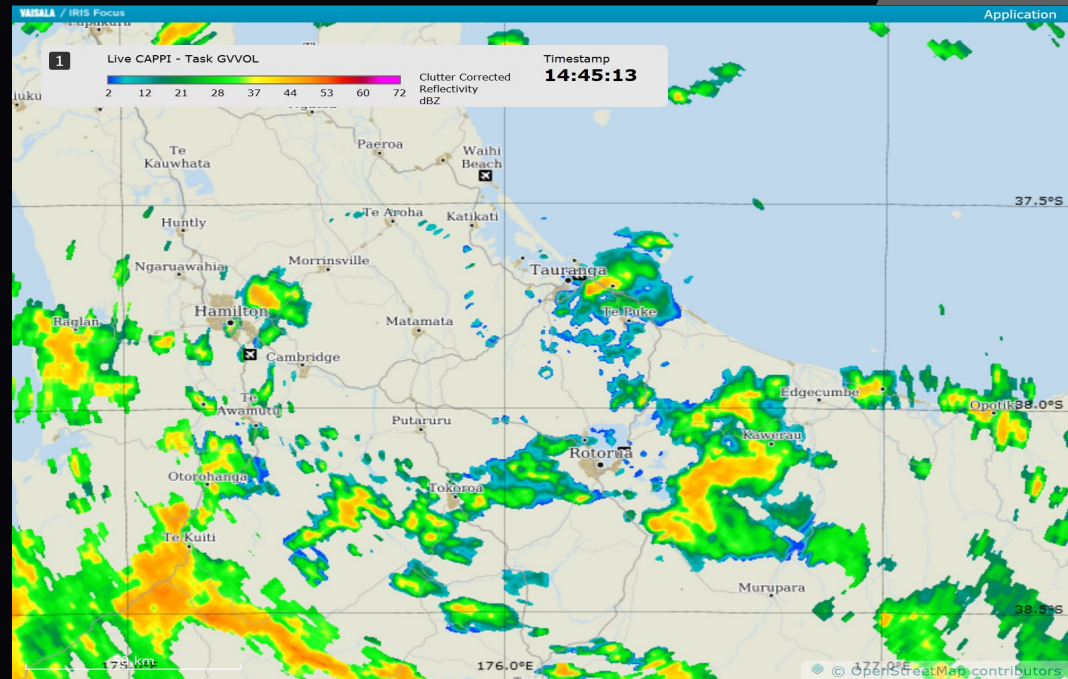
INCREASE ACCESSIBILITY



Kiosk Display Mode for 'Big Screen' or 'On the Wall' Presentation

- *Useful when you need to display information for people who are walking by*
- *Maximizes the data display area and font size for large displays in common areas, such as near entrances or situation rooms*
- *Always shows animation or still image of latest available data from radar network*

INCREASE ACCESSIBILITY



VAISALA

Experience **More.**